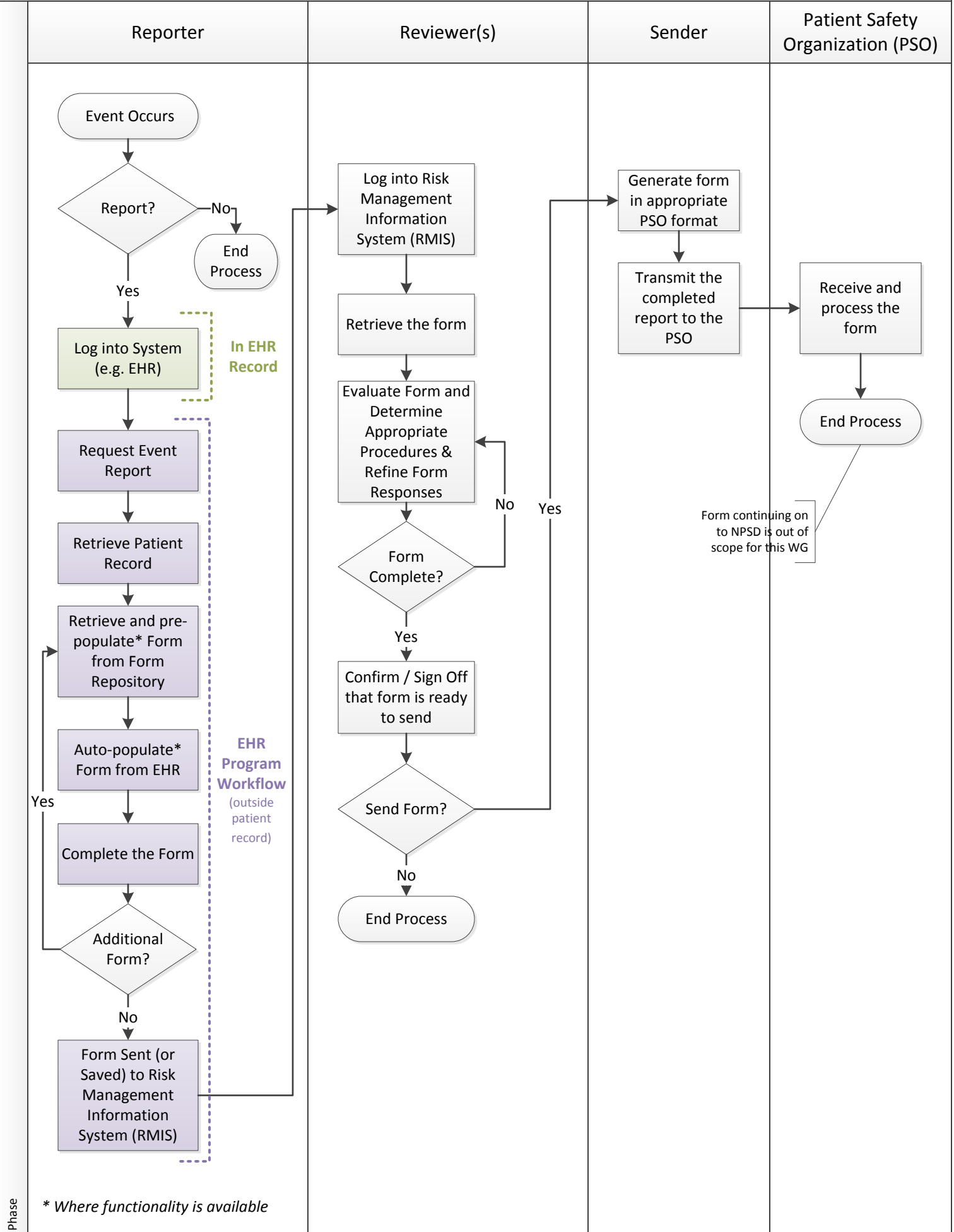


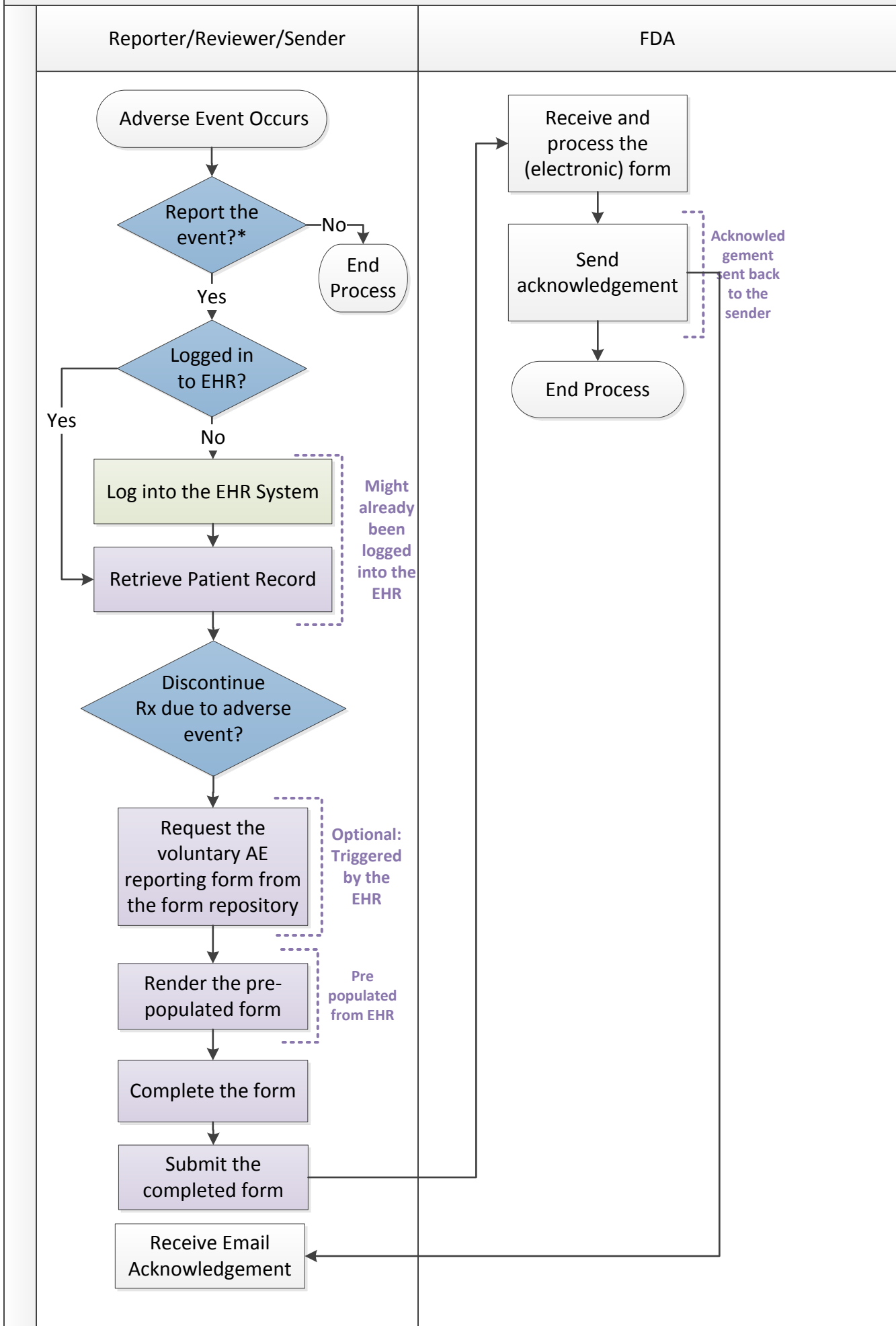
Patient Safety Event Workflow (To Be)



* Where functionality is available

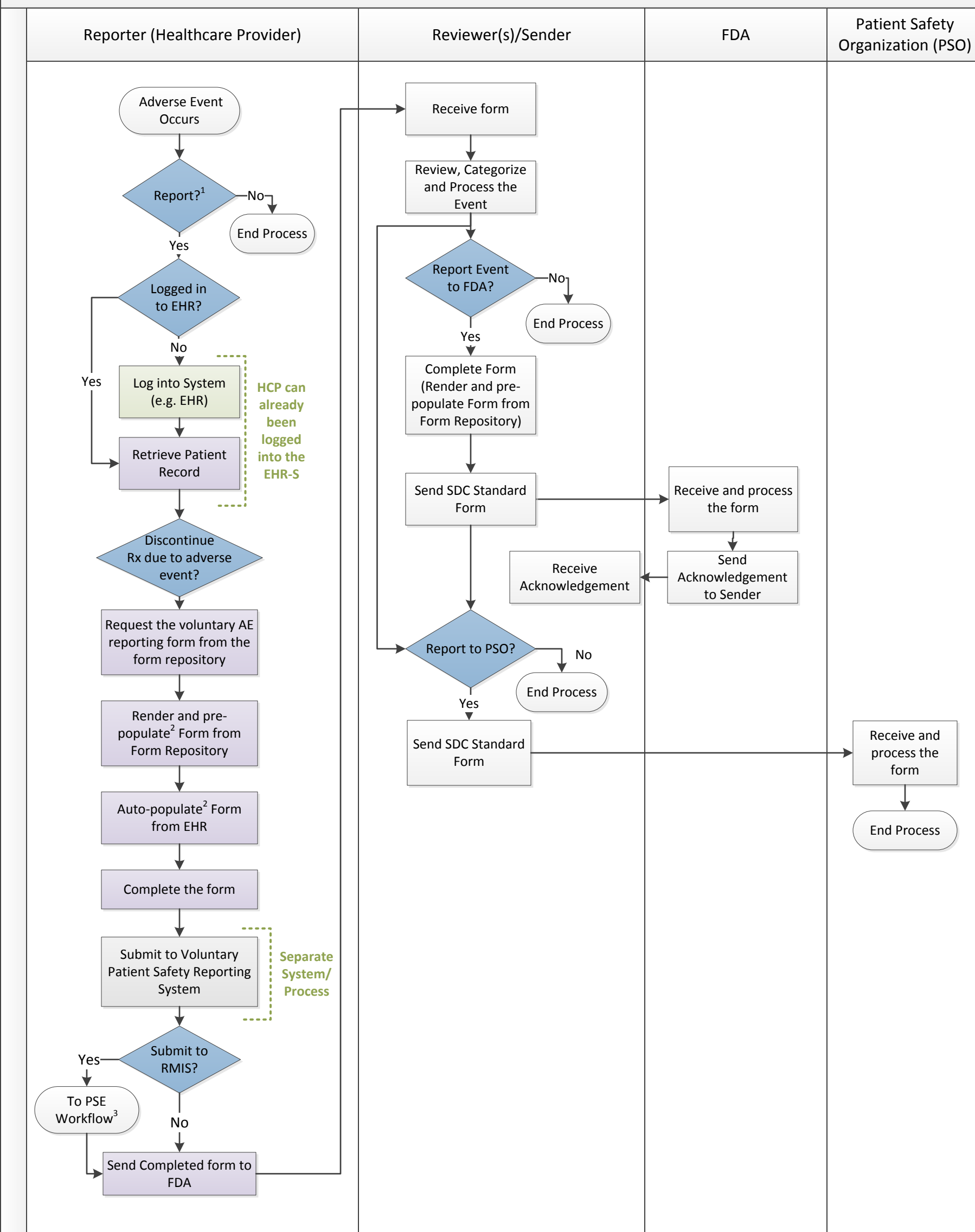
Phase

Adverse Event Workflow (Voluntary Reporting (Rx) – Within Clinical Setting)



* whether the adverse event might be related to the drug, what adverse events are expected (or known), is this adverse event different even if expected and non-serious, etc

Adverse Event Workflow (Voluntary Reporting (Rx) – Inpatient)



1 - Whether the adverse event might be related to the drug; what adverse events are expected, is this adverse event different even if expected and non-serious, etc
 2 - Where functionality is available
 3 - Excludes reporting to PSO; Reporting to PSO managed in this WF to ensure FDA report is first

Adverse Event Workflow (Mandatory Reporting (Device) – Inpatient-MedSun Hospitals)

