



Standards



Innovation



Technology



Commitment



Reliability



Quality



Efficiency

**SOLUTIONS
DELIVERED.**

DME eRx Pilot Requirements

Name of Project: EMDI

Presented by: Nandini Ganguly

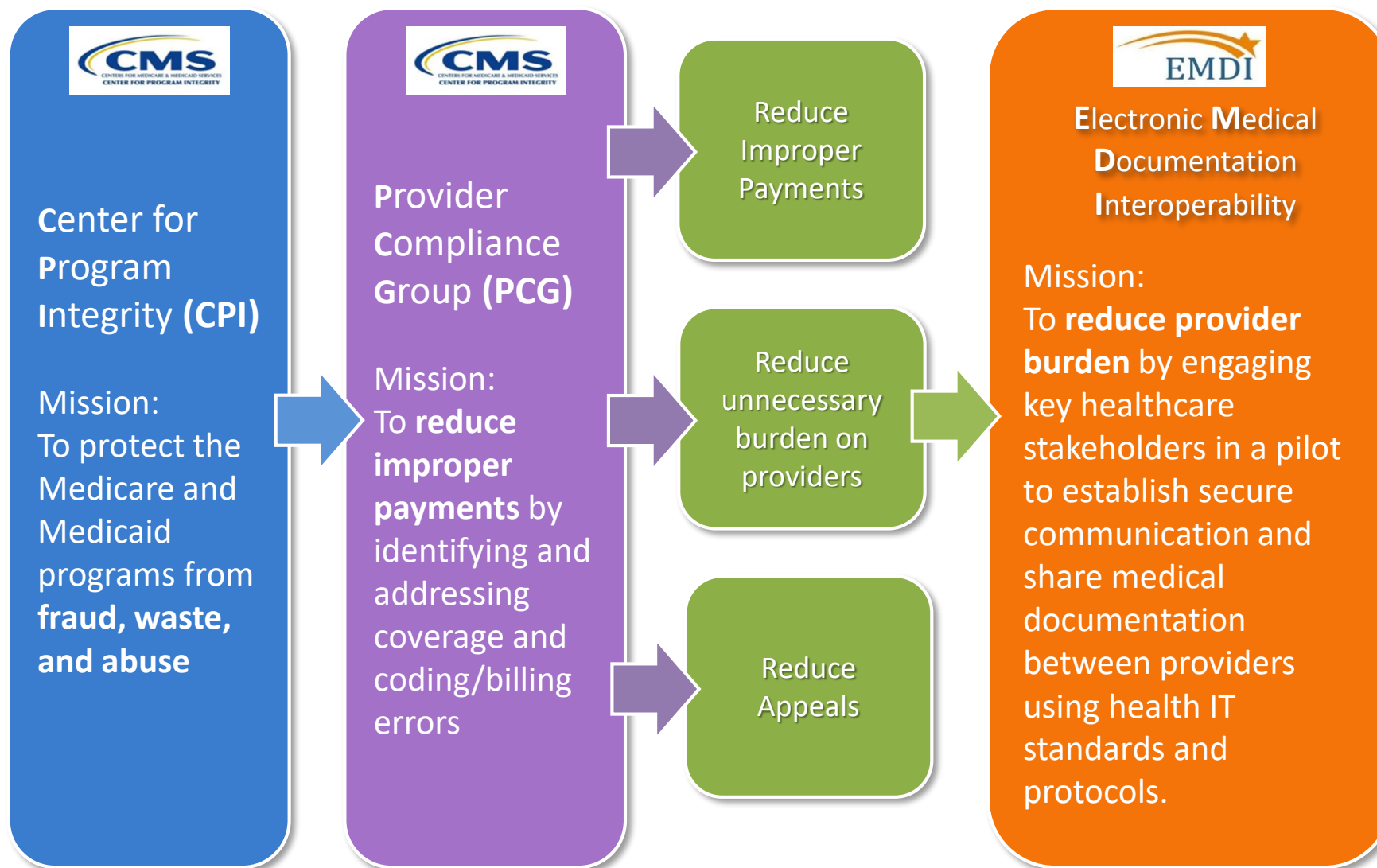
Date: 10/22/2019



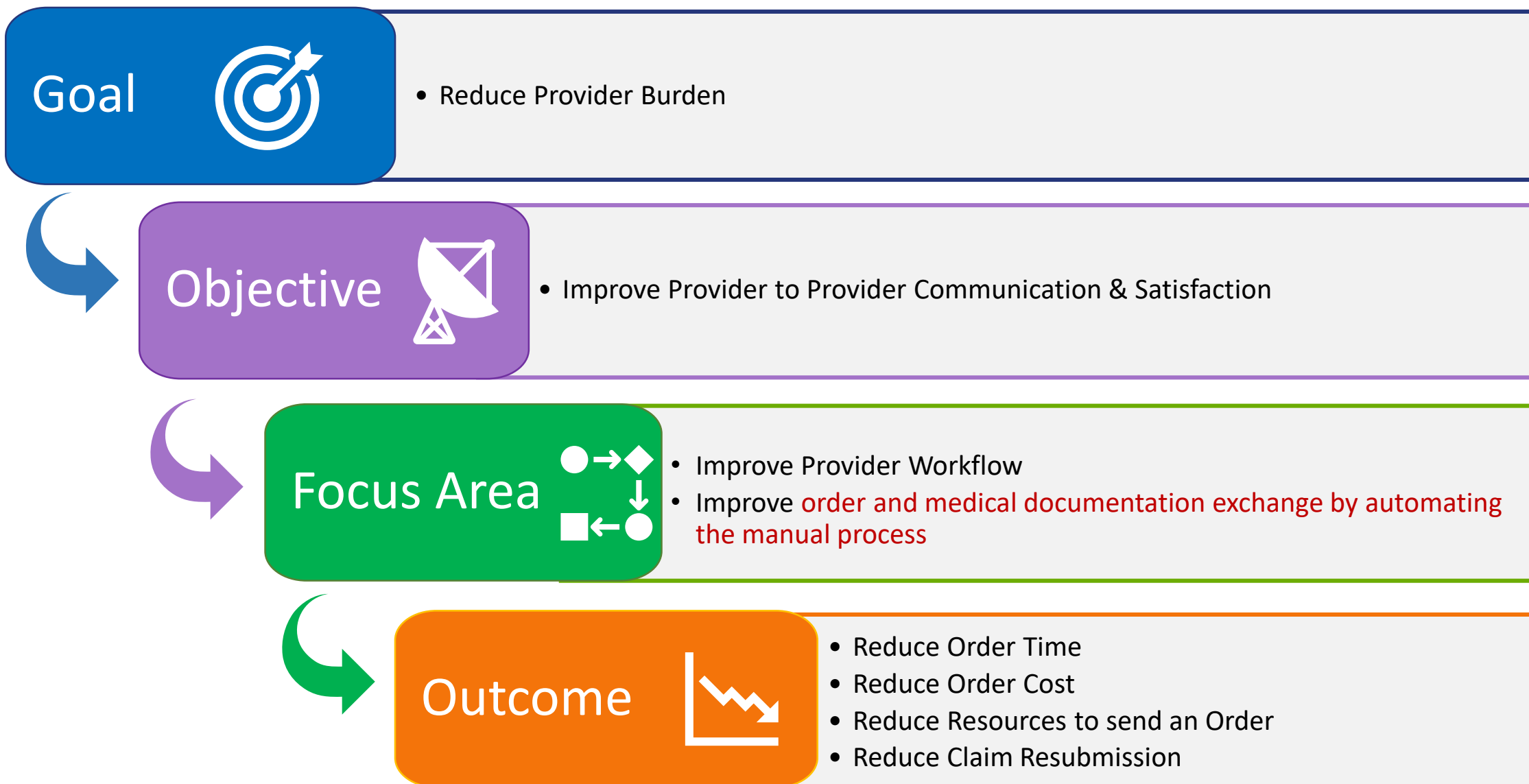
- ⚙️ DME eRx Pilot Goals Alignment
 - ⚙️ DME eRx Measures
- ⚙️ Pre-Pilot Environmental Scan Demo
- ⚙️ Pilot Requirements/Expectations
- ⚙️ Next Steps

DME eRx Pilot Goals

CPI, PCG, and EMDI Goal Alignment



DME eRx Goal, Objective & Outcome



Challenges in Order/Referral Process



Challenges in initiating, tracking, and renewal of paper-based manual orders/referrals

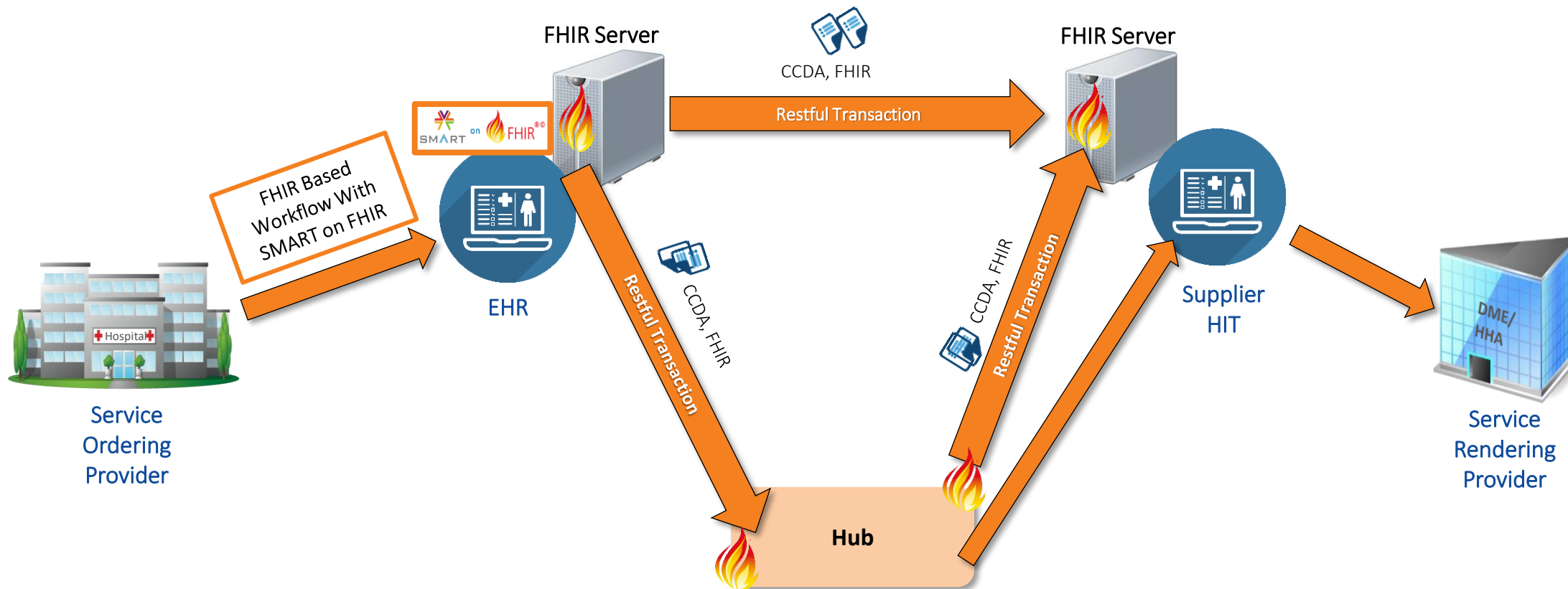
Lack of readily available information on requirements, authorizations

Delay caused by paper-based communication

Difficulty in obtaining missing documentation/signatures in a timely manner and poor traceability of such requests

Claim denials and appeals due to missing documentation/signatures

DME eRx Pilot Workflow



DME eRx Pilot Approach



SMART on FHIR
Application
Prototype



FHIR based DME/HHA
Order Referral
Implementation Guide



Test IG and
prototype using
DME eRx Pilots



DME eRx Pilot Participants



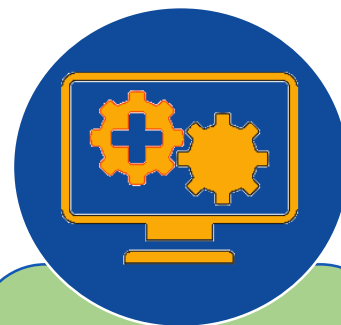
Service
Ordering
Provider

Hospitals,
Clinics, or
Physician
Groups



EHR

Hospital
EHR System



Supplier HIT

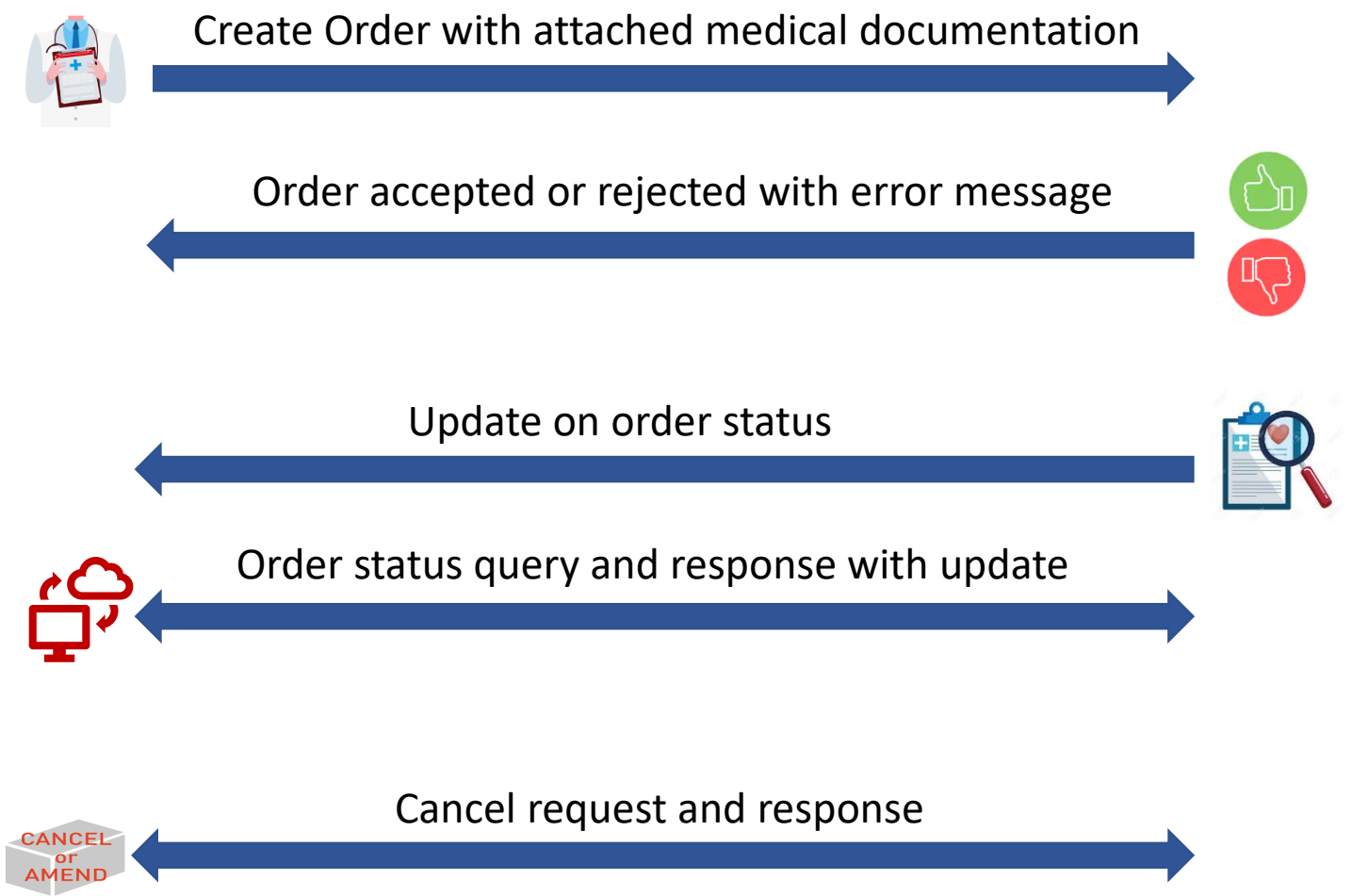
DME
Supplier's
Health IT
System



Service
Rendering
Provider







DME Supplier

In Scope



Out of Scope/Future

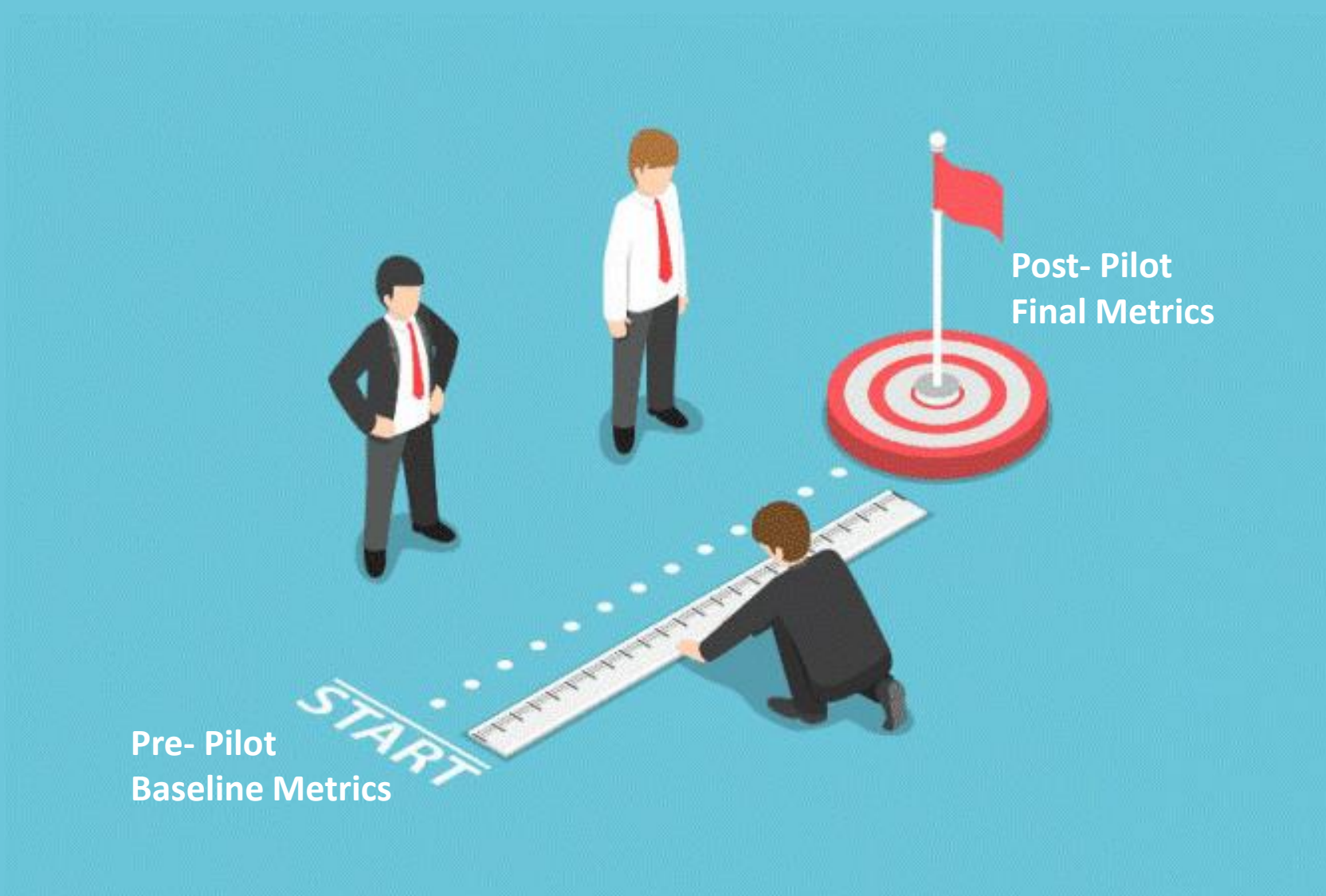


-  Responses from patients, patient directed care
-  Non DME/HHA workflow
-  Cost considerations
-  Partial fulfillment of orders
-  Digital signatures
-  Order details on specific services

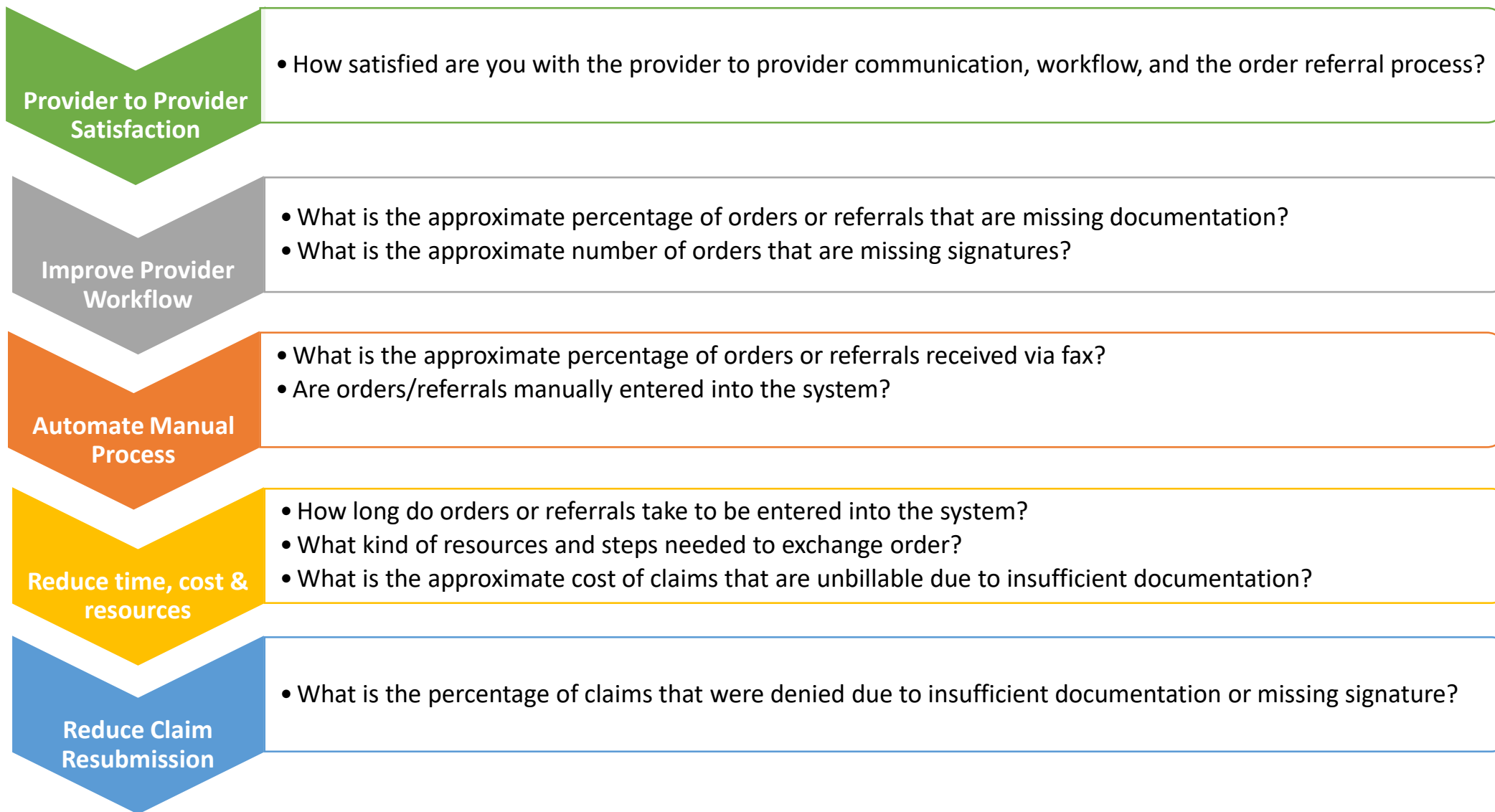
DME eRx Measures



DME eRx Measures – Process



EMDI Measures – Sample Questions

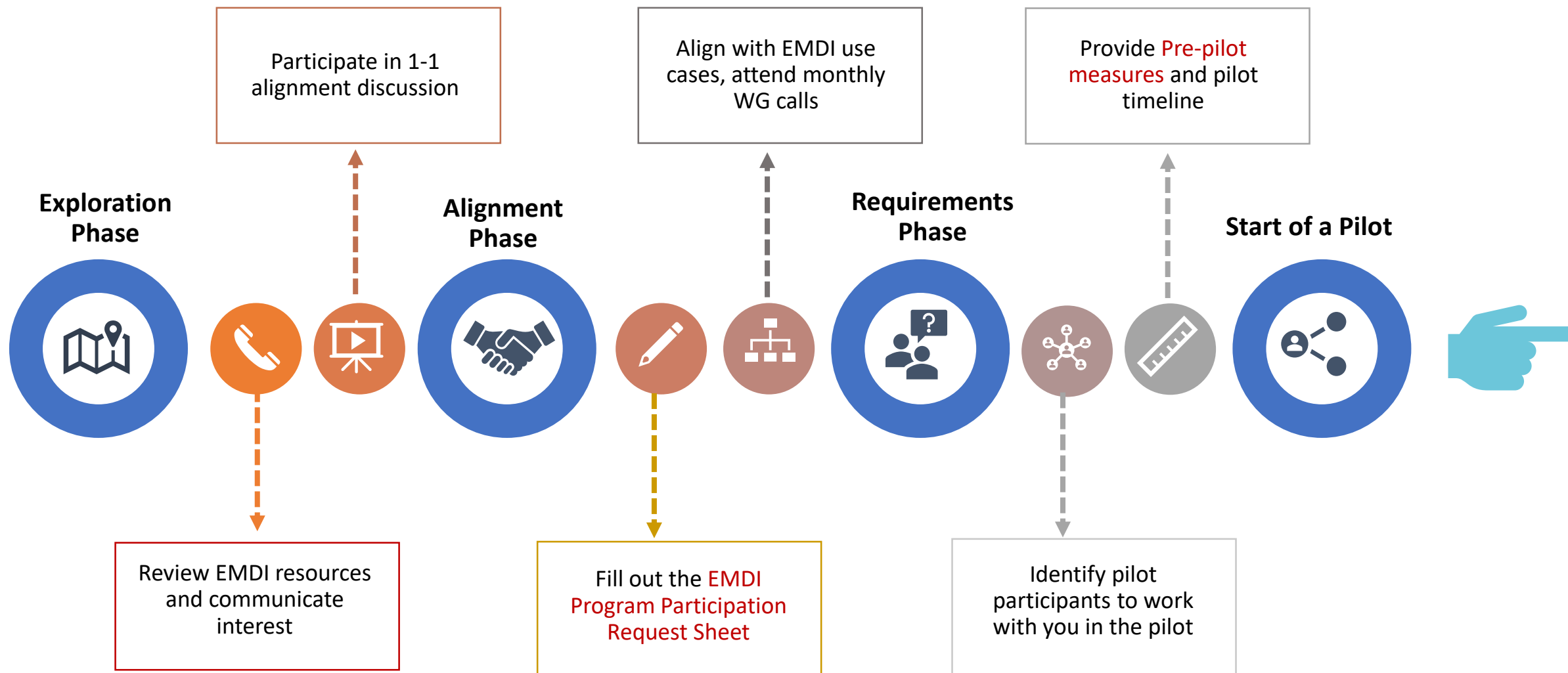


DME eRx Pre-Pilot Measures

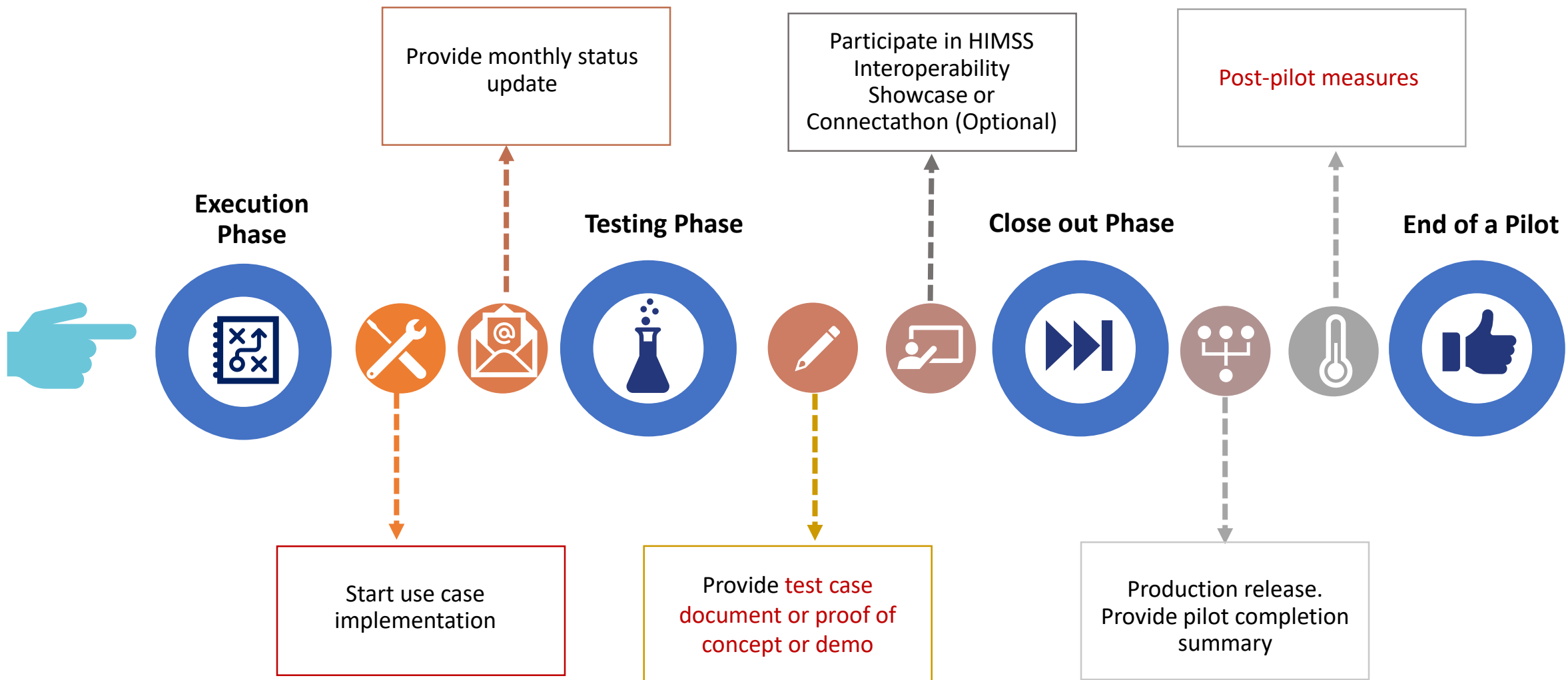
Pre-Pilot Environmental Scan: <https://www.research.net/r/DMEeRxWGPPES>

DME eRx Pilot Requirements

Pre-Pilot Steps



Pilot Steps



Next Steps

- Fill out the Pre-Pilot Environmental Scan: <https://www.research.net/r/DMEeRxWGPPES>
- Check out the DME eRx website: <https://oncprojecttracking.healthit.gov/wiki/display/TechLabSC/DME+eRx+Workgroup>
- Submit your EMDI Program Participation Request Sheet
- Next Meeting
 - November 20th 2:00 to 3:30 pm ET
 - ePrescribing Challenges and Hurdles – Panel Discussion
 - SMART on FHIR Demo

Thank You!