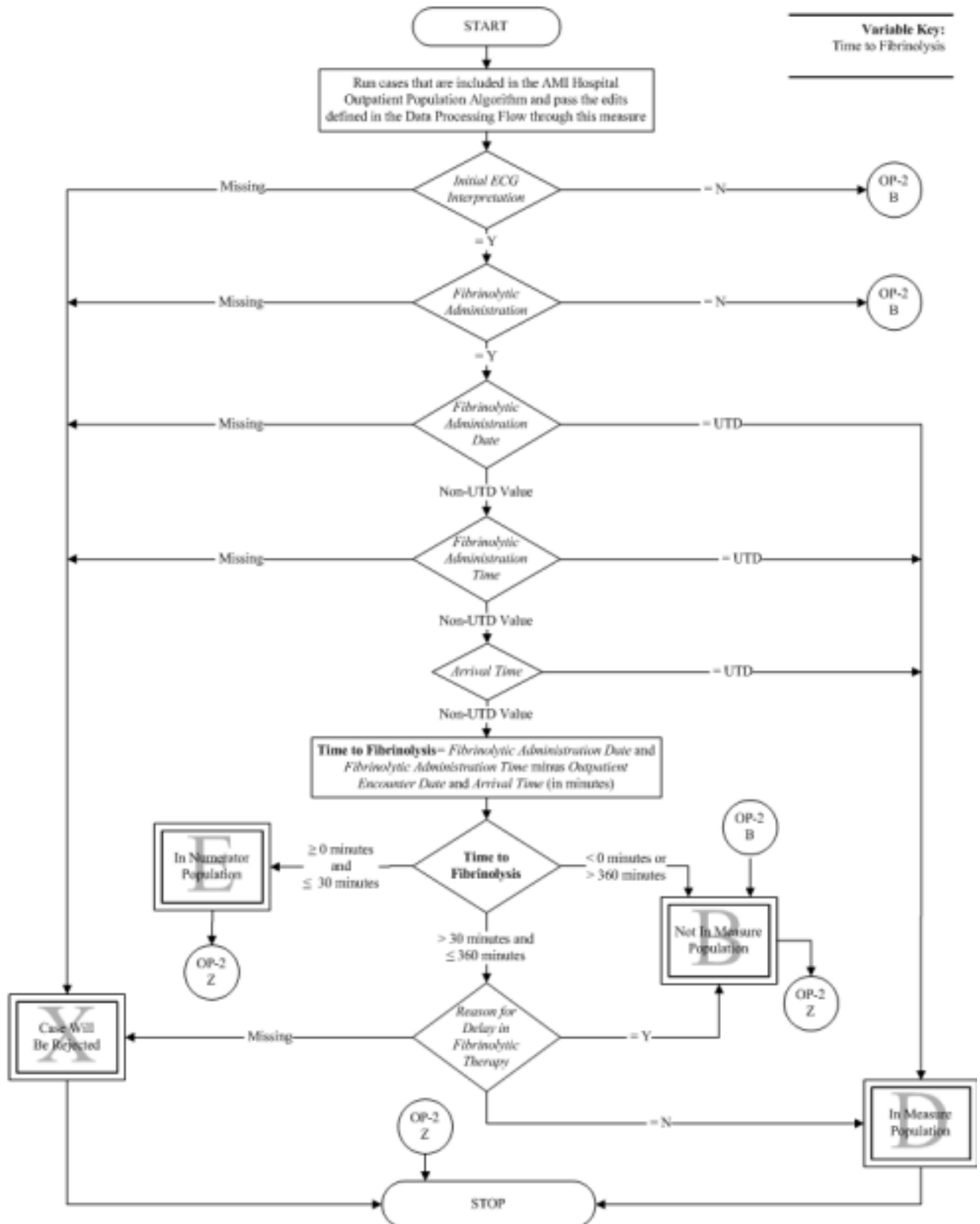


OP-2: Fibrinolytic Therapy Received Within 30 Minutes of ED Arrival

Numerator: Emergency Department AMI patients whose time from ED arrival to fibrinolysis is 30 minutes or less.

Denominator: Emergency Department AMI patients with ST-segment elevation on ECG who received fibrinolytic therapy.



**Algorithm Narrative for OP-2:
Fibrinolytic Therapy Received Within 30 Minutes of ED Arrival**

Numerator: Emergency Department AMI patients whose time from ED arrival to fibrinolysis is 30 minutes or less.

Denominator: Emergency Department AMI patients with ST-segment elevation on ECG who received fibrinolytic therapy.

1. Start. Run all cases that are included in the AMI Hospital Outpatient Population Algorithm and pass the edits defined in the Data Processing Flow through this measure. Proceed to *Initial ECG Interpretation*.
2. Check *Initial ECG interpretation*.
 - a. If *Initial ECG interpretation* is missing, the case will proceed to a Measure Category Assignment of X and will be rejected. Return to Transmission Data Processing Flow: Clinical in the Data Transmission section.
 - b. If *Initial ECG Interpretation* equals No, the case will proceed to a Measure Category Assignment of B. Return to Transmission Data Processing Flow: Clinical in the Data Transmission section.
 - c. If *Initial ECG interpretation* equals Yes, the case will proceed to *Fibrinolytic Administration*.
3. Check *Fibrinolytic Administration*.
 - a. If *Fibrinolytic Administration* is missing, the case will proceed to a Measure Category Assignment of X and will be rejected. Return to Transmission Data Processing Flow: Clinical in the Data Transmission section.
 - b. If *Fibrinolytic Administration* equals No, the case will proceed to a Measure Category Assignment of B. Return to Transmission Data Processing Flow: Clinical in the Data Transmission section.
 - c. If *Fibrinolytic Administration* equals Yes, the case will proceed to *Fibrinolytic Administration Date*.
4. Check *Fibrinolytic Administration Date*.
 - a. If *Fibrinolytic Administration Date* is missing, the case will proceed to a Measure Category Assignment of X and will be rejected. Return to Transmission Data Processing Flow: Clinical in the Data Transmission section.
 - b. If *Fibrinolytic Administration Date* equals UTD, the case will proceed to a Measure Category Assignment of D. Return to Transmission Data Processing Flow: Clinical in the Data Transmission section.
 - c. If *Fibrinolytic Administration Date* equals Non-UTD Value, the case will proceed to *Fibrinolytic Administration Time*.
5. Check *Fibrinolytic Administration Time*.
 - a. If *Fibrinolytic Administration Time* is missing, the case will proceed to a Measure Category Assignment of X and will be rejected. Return to Transmission Data Processing Flow: Clinical in the Data Transmission section.
 - b. If *Fibrinolytic Administration Time* equals UTD, the case will proceed to a Measure Category Assignment of D. Return to Transmission Data Processing Flow: Clinical in the Data Transmission section.
 - c. If *Fibrinolytic Administration Time* Equals Non-UTD Value, the case will proceed to *Arrival Time*.