

2020 eCQM Flow Identifier: CMS135v8

NOTE: This low fidelity graphic is not intended to substitute for the detailed technical specifications. Refer to the eCQM for a complete listing of required data elements.

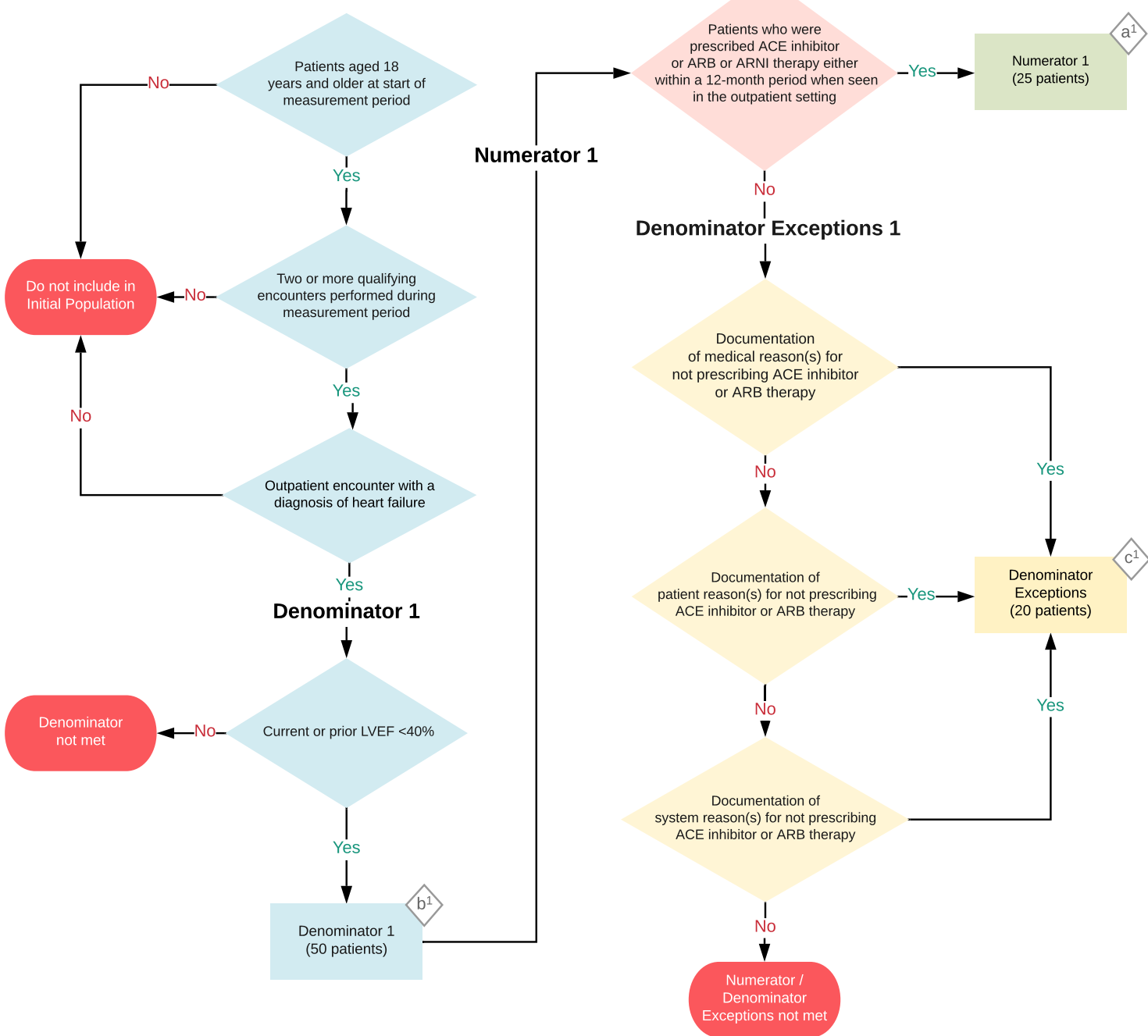
Heart Failure (HF): Angiotensin-Converting Enzyme (ACE) Inhibitor or Angiotensin Receptor Blocker (ARB) or Angiotensin Receptor-Nepriylsin Inhibitor (ARNI) Therapy for Left Ventricular Systolic Dysfunction (LVSD)

Percentage of patients aged 18 years and older with a diagnosis of heart failure (HF) with a current or prior left ventricular ejection fraction (LVEF) < 40% who were prescribed ACE inhibitor or ARB or ARNI therapy either within a 12-month period when seen in the outpatient setting OR at each hospital discharge

This eCOM requires the submission of one performance rate

Initial Population 1

Note: this population should be reported once per patient



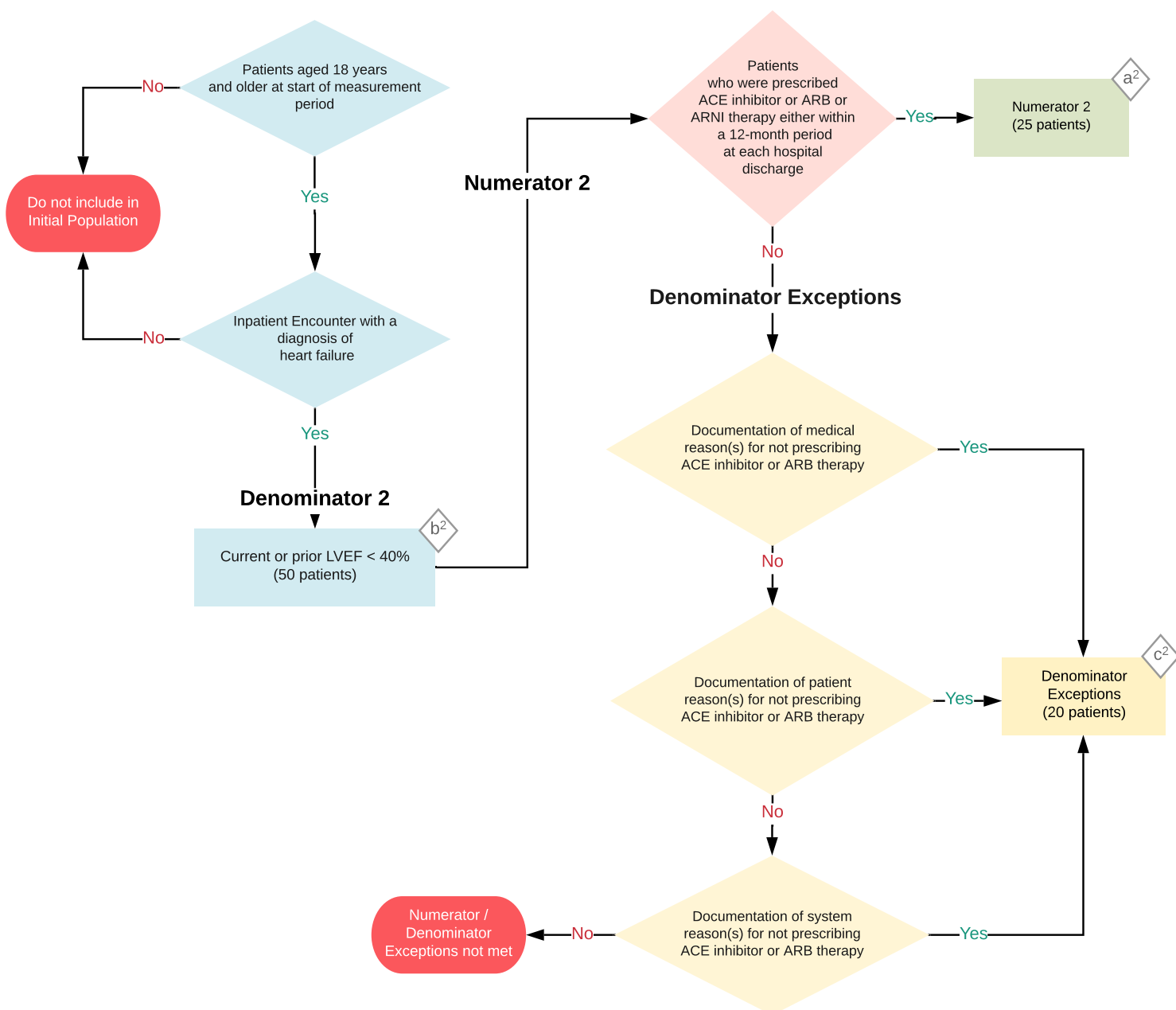
2020 eCQM Flow Identifier: CMS135v8

Heart Failure (HF): Angiotensin-Converting Enzyme (ACE) Inhibitor or Angiotensin Receptor Blocker (ARB) or Angiotensin Receptor-Nepriylsin Inhibitor (ARNI) Therapy for Left Ventricular Systolic Dysfunction (LVSD)

This eCOM requires the submission of one performance rate

Initial Population 2

Note: this population should be reported for each inpatient discharge



Sample Calculation

Performance Rate (Population 1 and 2) =

$$\frac{\text{Numerator } (a^1 + a^2 = 50 \text{ patients})}{\text{Denominator } (b^1 + b^2 = 100 \text{ patients}) - \text{Denominator Exceptions } (c^1 + c^2 = 40 \text{ patients})} = 83.00 \%$$