

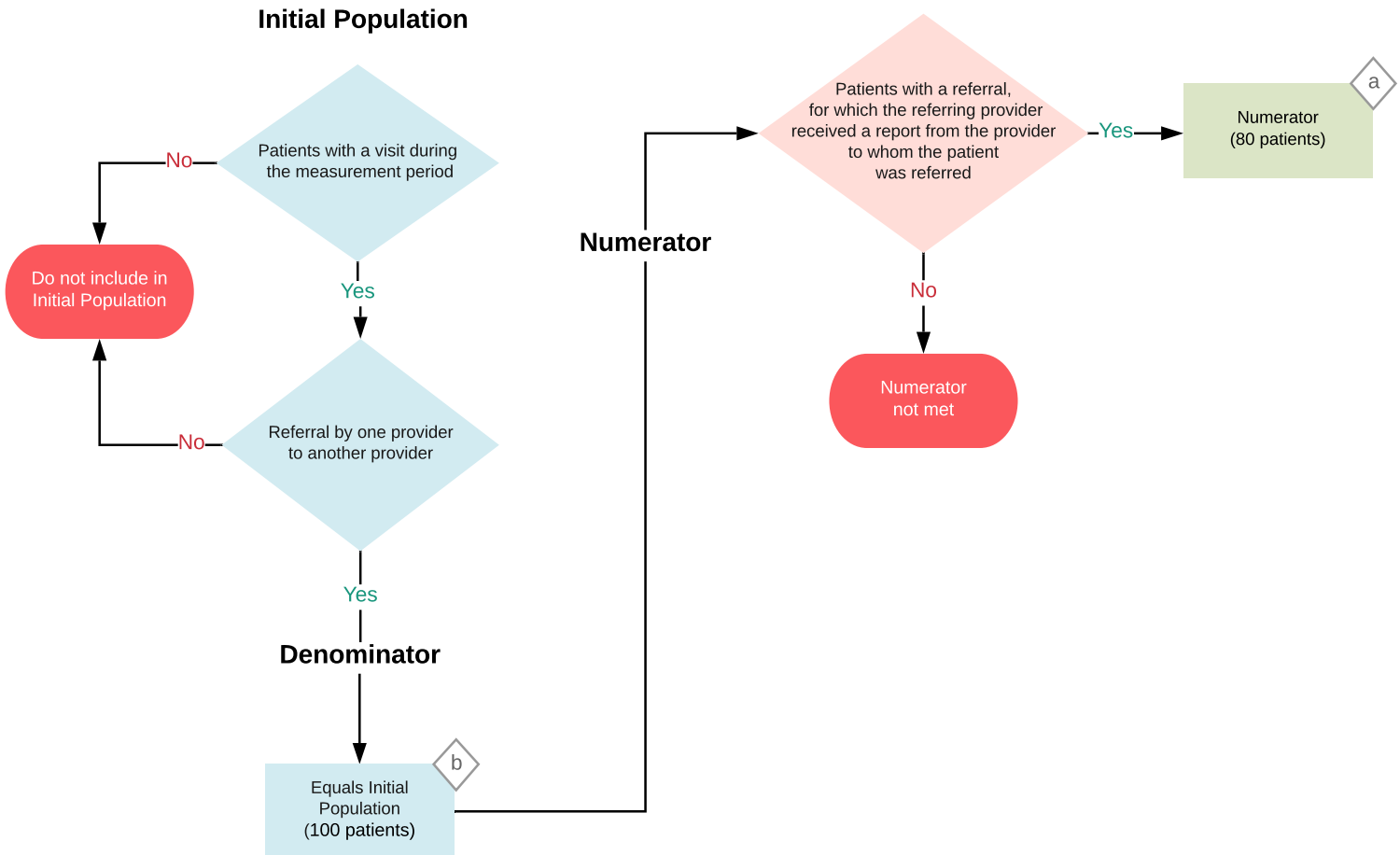
**2020 eCQM Flow Identifier: CMS50v8**

**NOTE:** This low fidelity graphic is not intended to substitute for the detailed technical specifications. Refer to the eCQM for a complete listing of required data elements.

**Closing the Referral Loop: Receipt of Specialist Report**

Percentage of patients with referrals, regardless of age, for which the referring provider receives a report from the provider to whom the patient was referred

*This eCOM requires the submission of one performance rate*



**Sample Calculation**

**Performance Rate =**

$$\frac{\text{Numerator ( a = 80 Patients)}}{\text{Denominator ( b = 100 patients)}} = 80.00 \%$$