

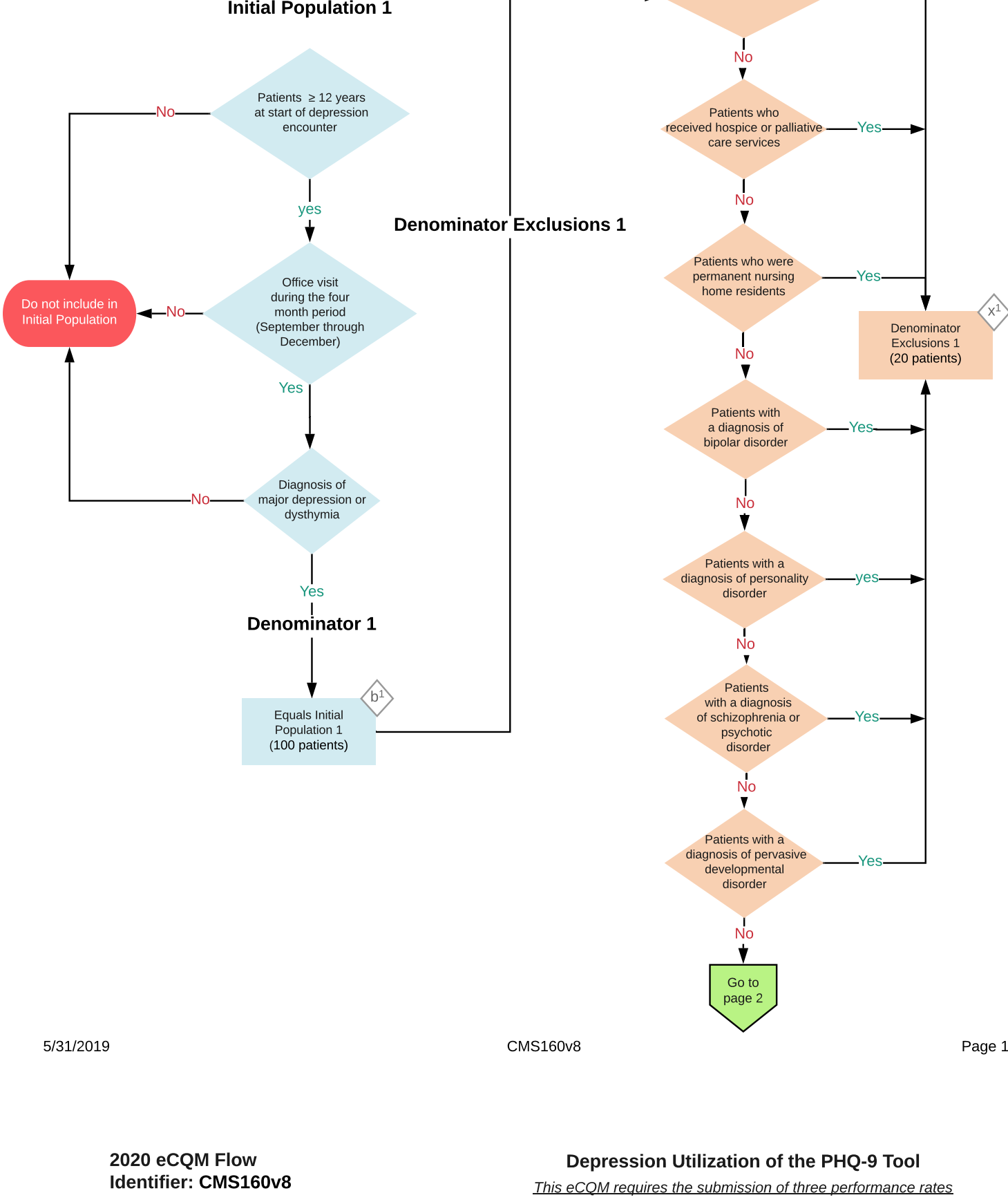
**2020 eCQM Flow Identifier: CMS160v8**

**NOTE:** This low fidelity graphic is not intended to substitute for the detailed technical specifications. Refer to the eCQM for a complete listing of required data elements.

**Depression Utilization of the PHQ-9 Tool**

The percentage of adolescent patients 12 to 17 years of age and adult patients age 18 and older with the diagnosis of major depression or dysthymia who have a completed PHQ-9 during each applicable 4 month period in which there was a qualifying depression encounter

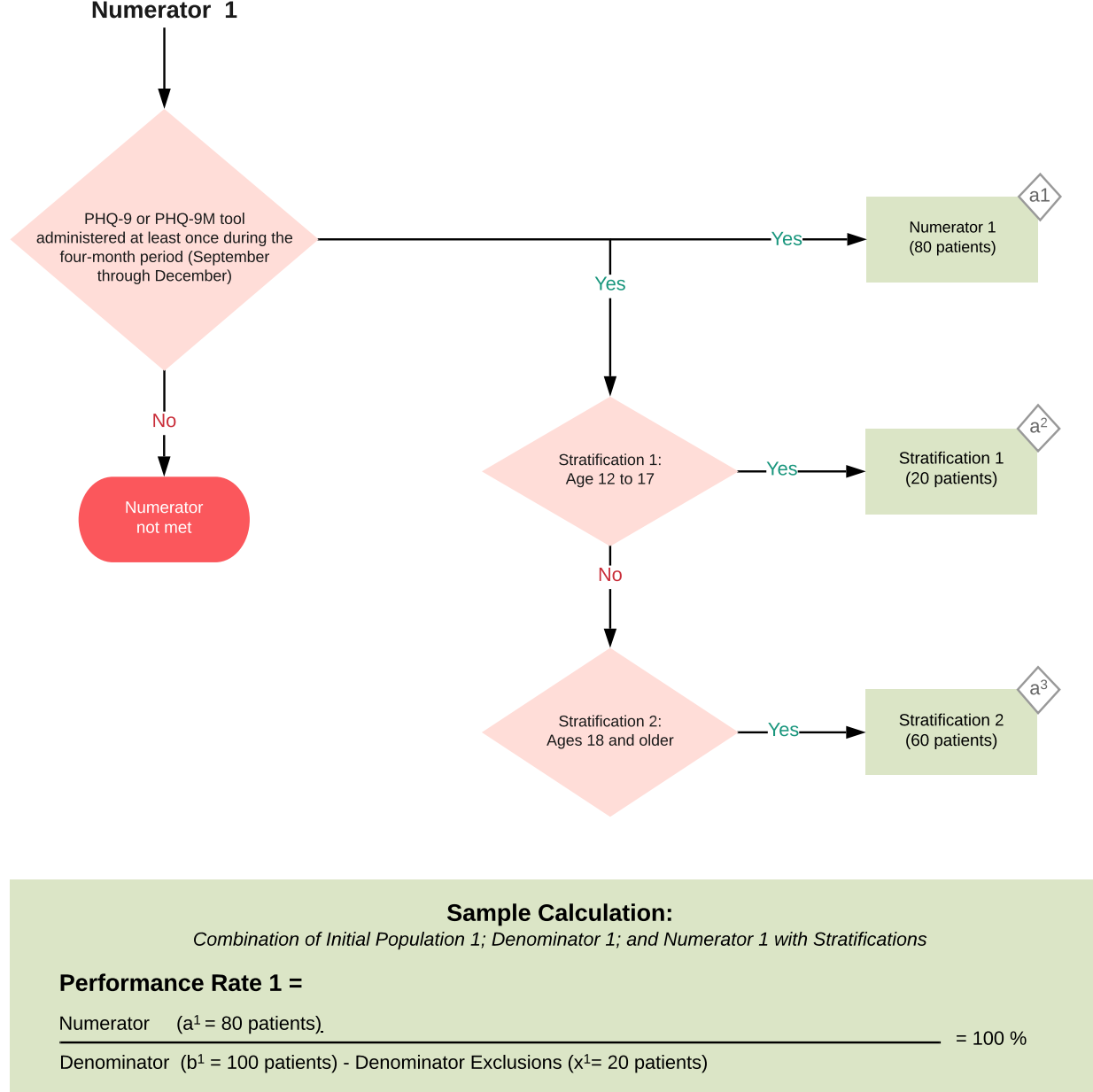
This eCOM requires the submission of three performance rates.



**2020 eCQM Flow Identifier: CMS160v8**

**Depression Utilization of the PHQ-9 Tool**

This eCOM requires the submission of three performance rates.



**Sample Calculation:**  
Combination of Initial Population 1; Denominator 1; and Numerator 1 with Stratifications

**Performance Rate 1 =**  
Numerator (a<sup>1</sup> = 80 patients) / Denominator (b<sup>1</sup> = 100 patients) - Denominator Exclusions (x<sup>1</sup> = 20 patients) = 100 %

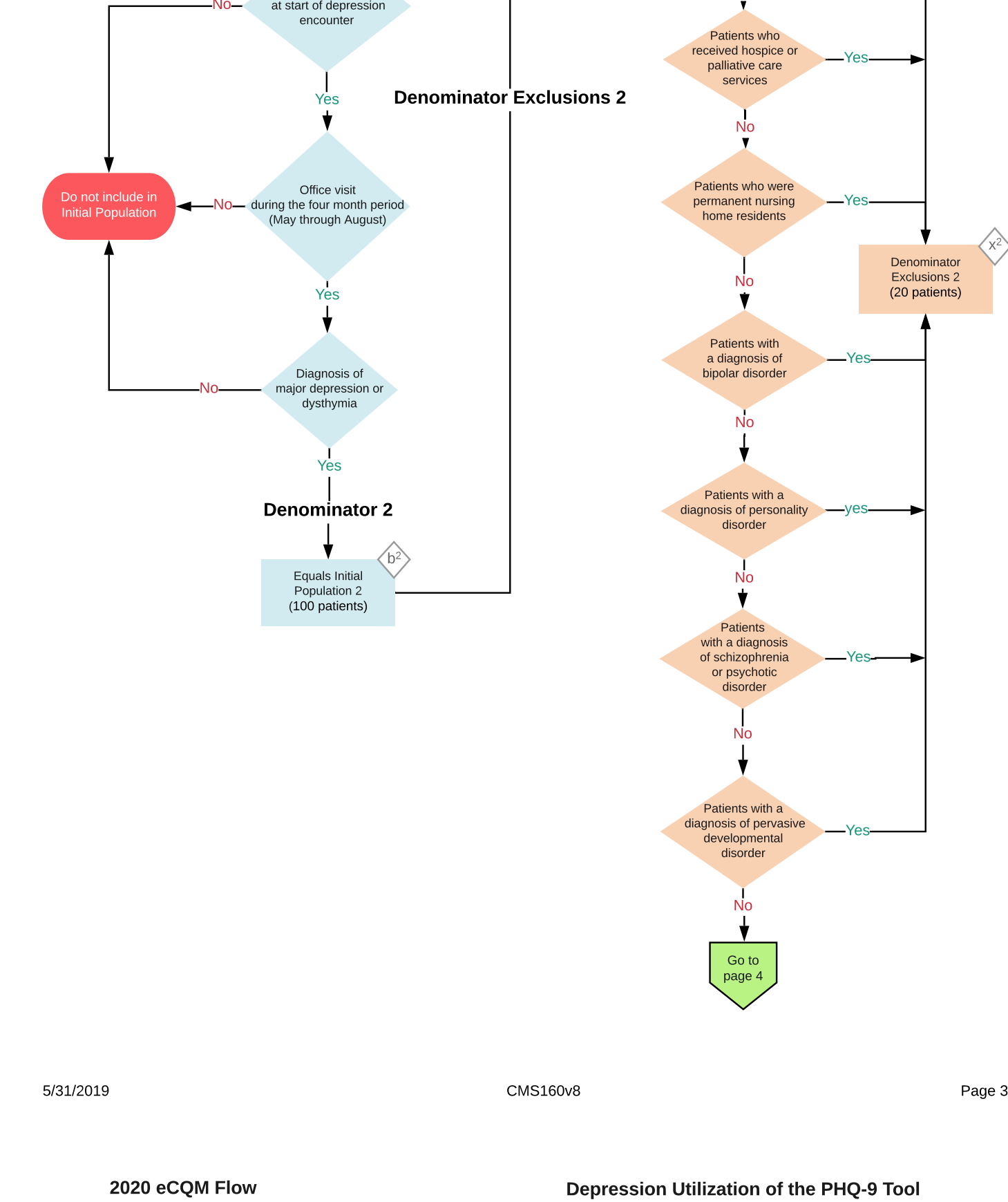
**Stratification 1 =**  
Numerator (a<sup>2</sup> = 20 patients) / Denominator (b<sup>1</sup> = 100 patients) - Denominator Exclusions (x<sup>1</sup> = 20 patients) = 25 %

**Stratification 2 =**  
Numerator (a<sup>3</sup> = 60 patients) / Denominator (b<sup>1</sup> = 100 patients) - Denominator Exclusions (x<sup>1</sup> = 20 patients) = 75 %

**2020 eCQM Flow Identifier: CMS160v8**

**Depression Utilization of the PHQ-9 Tool**

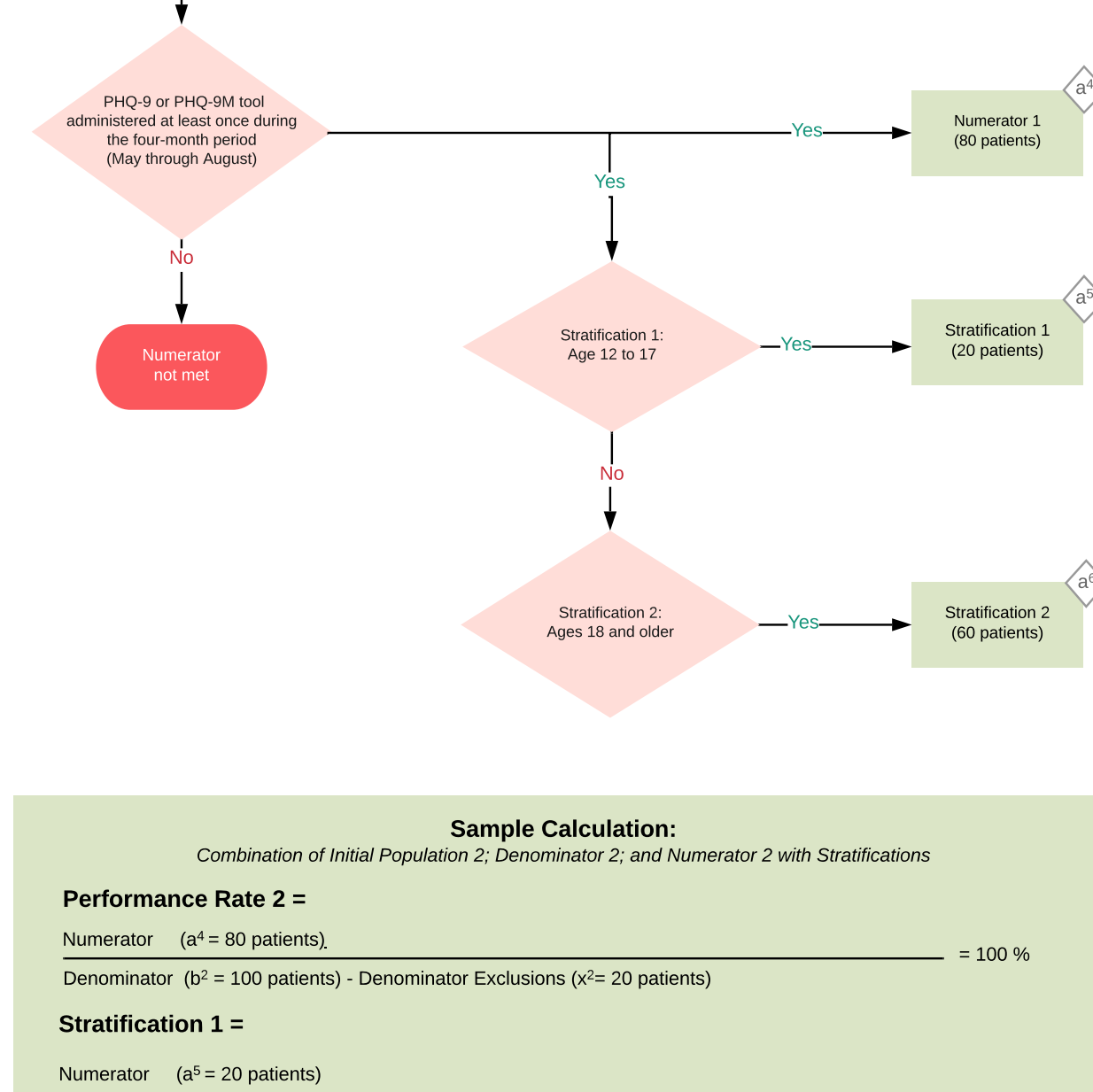
This eCOM requires the submission of three performance rates.



**2020 eCQM Flow Identifier: CMS160v8**

**Depression Utilization of the PHQ-9 Tool**

This eCOM requires the submission of three performance rates.



**Sample Calculation:**  
Combination of Initial Population 2; Denominator 2; and Numerator 2 with Stratifications

**Performance Rate 2 =**  
Numerator (a<sup>4</sup> = 80 patients) / Denominator (b<sup>2</sup> = 100 patients) - Denominator Exclusions (x<sup>2</sup> = 20 patients) = 100 %

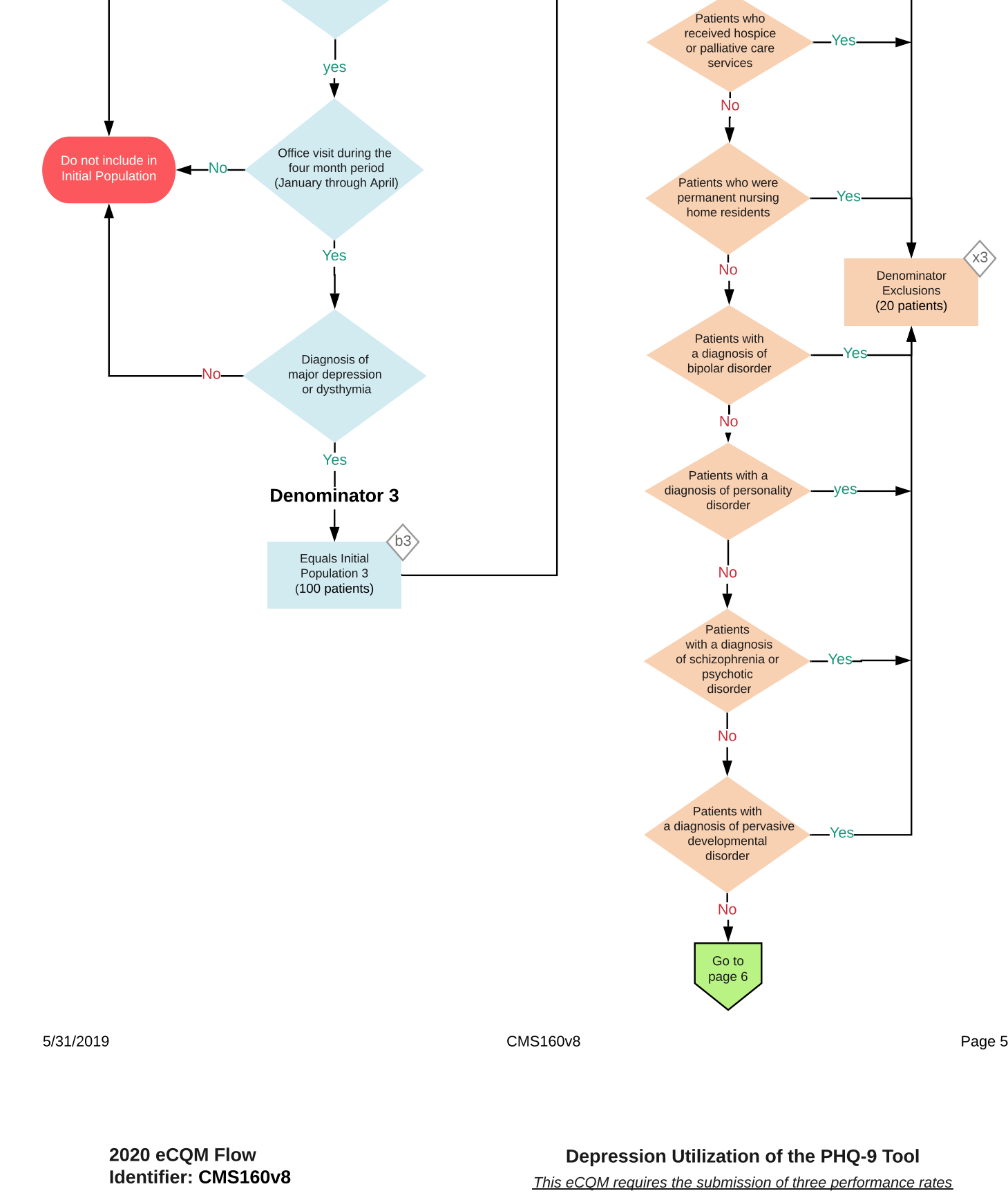
**Stratification 1 =**  
Numerator (a<sup>5</sup> = 20 patients) / Denominator (b<sup>2</sup> = 100 patients) - Denominator Exclusions (x<sup>2</sup> = 20 patients) = 25 %

**Stratification 2 =**  
Numerator (a<sup>6</sup> = 60 patients) / Denominator (b<sup>2</sup> = 100 patients) - Denominator Exclusions (x<sup>2</sup> = 20 patients) = 75 %

**2020 eCQM Flow Identifier: CMS160v8**

**Depression Utilization of the PHQ-9 Tool**

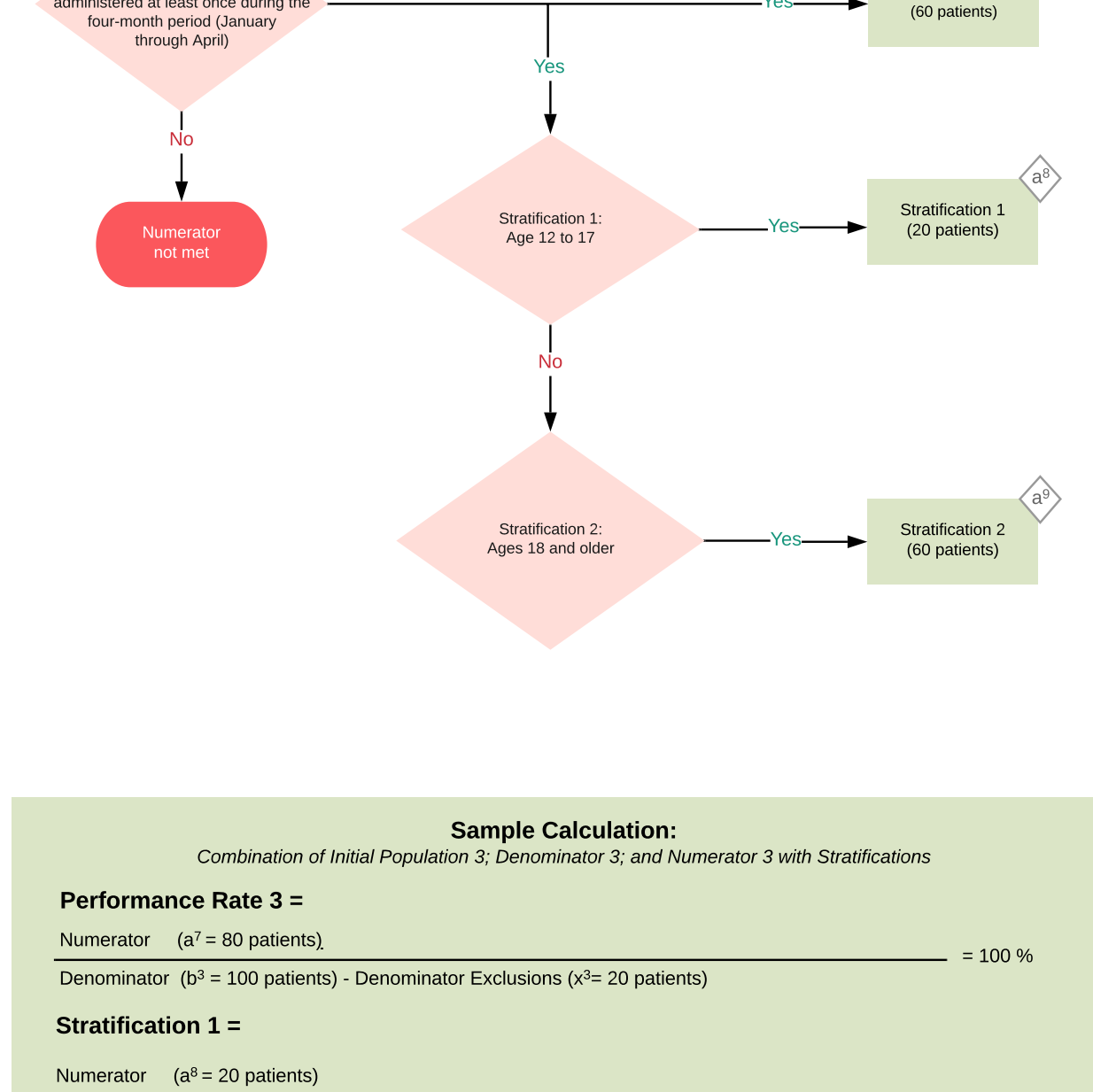
This eCOM requires the submission of three performance rates.



**2020 eCQM Flow Identifier: CMS160v8**

**Depression Utilization of the PHQ-9 Tool**

This eCOM requires the submission of three performance rates.



**Sample Calculation:**  
Combination of Initial Population 3; Denominator 3; and Numerator 3 with Stratifications

**Performance Rate 3 =**  
Numerator (a<sup>7</sup> = 80 patients) / Denominator (b<sup>3</sup> = 100 patients) - Denominator Exclusions (x<sup>3</sup> = 20 patients) = 100 %

**Stratification 1 =**  
Numerator (a<sup>8</sup> = 20 patients) / Denominator (b<sup>3</sup> = 100 patients) - Denominator Exclusions (x<sup>3</sup> = 20 patients) = 25 %

**Stratification 2 =**  
Numerator (a<sup>9</sup> = 60 patients) / Denominator (b<sup>3</sup> = 100 patients) - Denominator Exclusions (x<sup>3</sup> = 20 patients) = 75 %